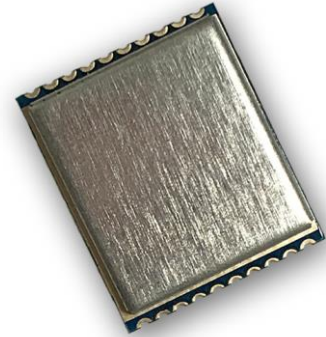


RYLR890 EVB

915MHz Bandwidth 125KHz

Source Code

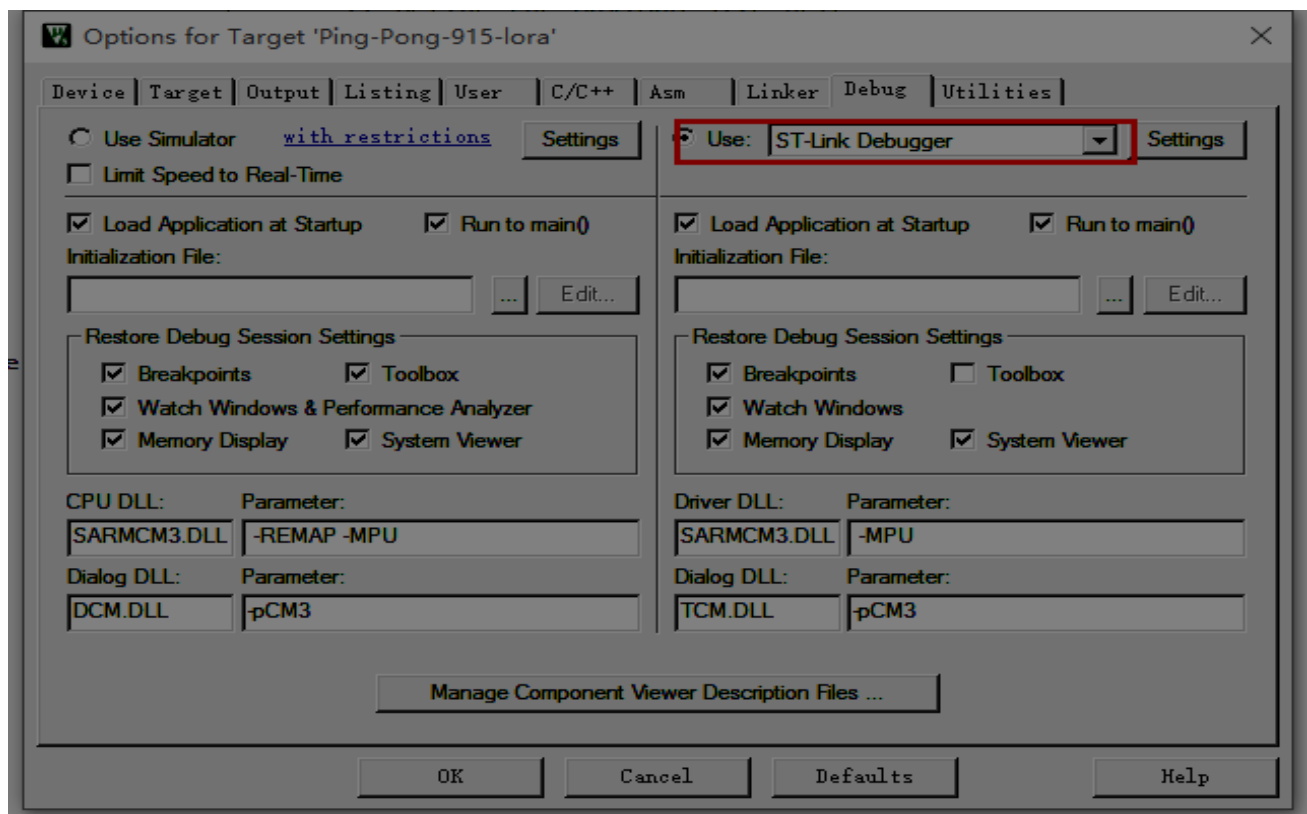


13mm*11mm*2.2mm

1. This project uses Keil-V5 uVision, MDK-Lite Version: 5.21a

Download here: <http://www2.keil.com/mdk5/uvision/>

2. Use ST-Link to debug.



3.All Lora settings are in top of Main.c except RF_Frequency and mode, this parameter was defined in project setting.

